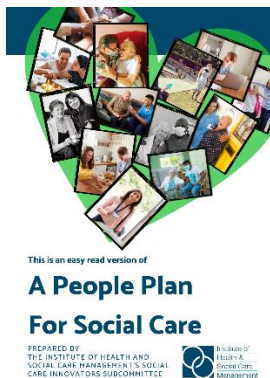


PEOPLE PLAN SURVEY

EASY READ



For your chance to win a £100 one4all voucher, all you need to do is complete this 15-minute survey.



The People Plan for Social Care, was published in December 2021

It was launched at the House of Lords on March 28th 2022.

The people plan is a report written by social care for social care.

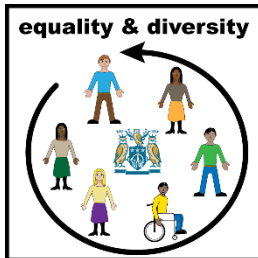


The plan make recommendations for real change

This survey is for the second version of the People Plan due to be published in November 2022.

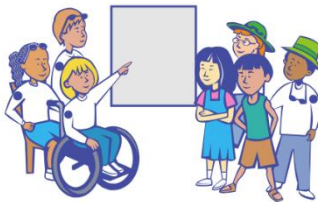
Section 1

Equality Diversity and Inclusion



Equality means treating people fairly

DIVERSITY



Diversity means there is a mix of different types of people. Different ages, shapes, heights, genders, races.

The UK is very diverse.

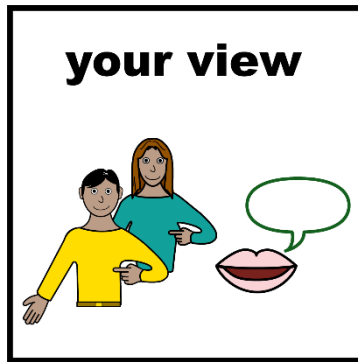


Diversity will play an important part in the future of care.



What is your view on equality, diversity and Inclusion of people using care and working care?

Question 1



What are your current views of equality, diversity and inclusion in social care?

Answer in sentences or key words

Put your answer in this box

Question 2

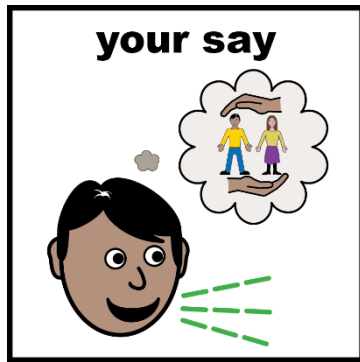


Do you know of any good ideas or examples of good practice supporting equality, diversity and inclusion in social care?

Answer in sentences or key words

Put your answer in this box

Question 3



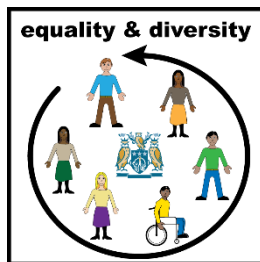
It's now time to have your say. What needs to change to make equality, diversity, and inclusion better in care?

Answer in sentences or key words

Put your answer in this box

Section 2 – Access to Care

What we mean by access to care:



What is accessibility like for people with disabilities/hidden disabilities?

How easy is it to find care?



Are people made aware of care pathways and available care services

Is there a capacity issue in care?



How easily can you access your care information?

How effective is information sharing?

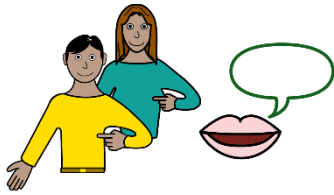


How effective is Integrated Care?

How easy is it to access good, consistent care and support?

Question 1

your view



What is your current opinion of access to care?

Answer in sentences or key words

Put your answer in this box

Question 2

good ideas

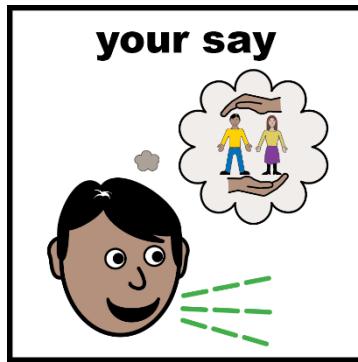


Do you know of any good ideas or examples of good practice supporting good access to care?

Answer in sentences or key words

Put your answer in this box

Question 3



It's now time to have your say. What needs to change to make access to care better?

Answer in sentences or key words

Put your answer in this box

Section 3 – Policies, Regulation and Guidance



Policies, regulation, and guidance determine how care is delivered.

They can come from central government or from local authorities.

They can also come from the care quality commission (CQC)



There has been lots of new policies, guidance and regulations since the beginning of COVID



We want to know how effective and clearly these changes/additions have been explained

Do you face challenges when it comes to policies, regulations, and guidance in care?

Do national and local policies, regulations work together well?

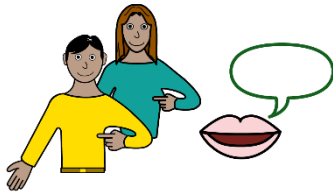
Are they followed by care providers?



Is the information good and clear enough to follow?

Question 1

your view



What is your current opinion of policies, regulation, and guidance for care?

Answer in sentences or key words

Put your answer in this box

Question 2

good ideas

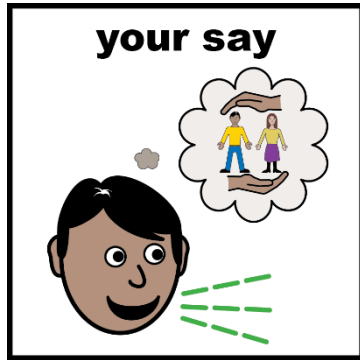


Do you know of any good ideas or examples of good practice of policies, regulation, and guidance in care?

Answer in sentences or key words

Put your answer in this box

Question 3



It's now time to have your say. What needs to change to make policies, regulation, and guidance in care better?

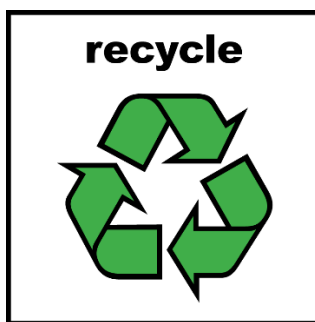
Answer in sentences or key words

Put your answer in this box

Section 4 – Greener Care

Environmental awareness and sustainability are going to be integral to the future of care.

Greener care means to have an environmentally friendly approach to care delivery



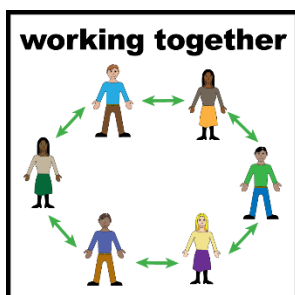
It's about more than just recycling

We want to know how we can influence the shift to greener care now.



It's about reducing our carbon emissions with a hope to become carbon neutral

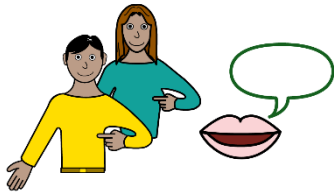
It's about reducing plastic waste



It's about working together to care for the planet for our future generations

Question 1

your view



What is your current opinion of greener care?

Answer in sentences or key words

Put your answer in this box

Question 2

good ideas

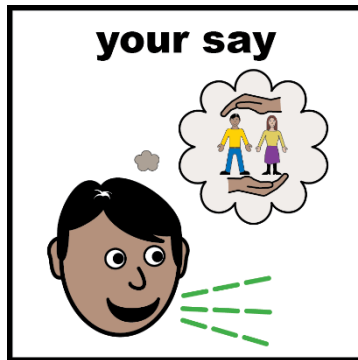


Do you know of any good ideas or examples of good practice of greener care?

Answer in sentences or key words

Put your answer in this box

Question 3

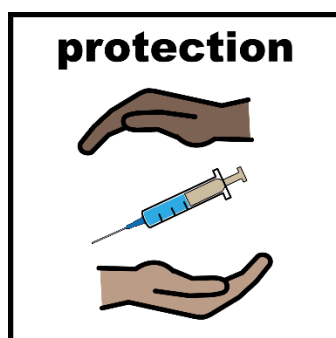
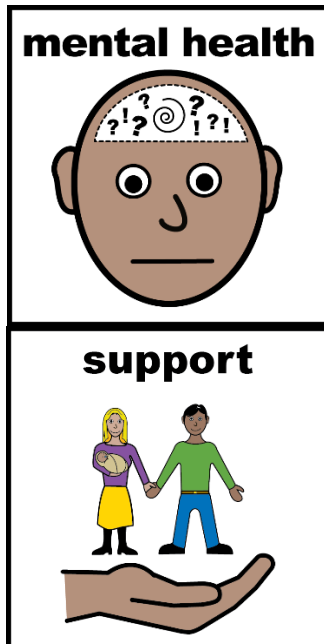


It's now time to have your say. What needs to change to make care greener?

Answer in sentences or key words

Put your answer in this box

Section 5 – Mental Health and Wellbeing of people using care services



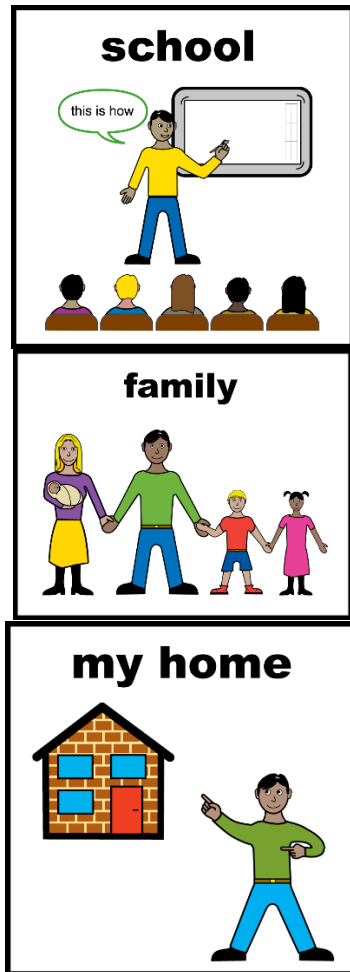
Wellbeing encompasses many areas.

We all have Mental health and wellbeing

To help change social care, we need to support the mental health and wellbeing of the people who use care services

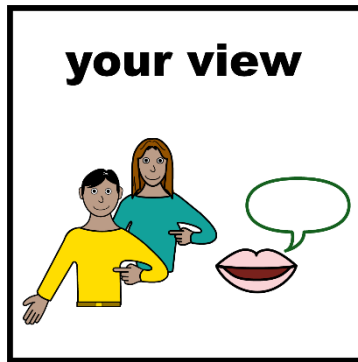
Wellbeing can include:

- personal dignity and self care
- being treated with respect
- physical and mental health and emotional wellbeing
- protection from abuse and neglect



- control by the individual over their care needs and daily life
- engagement in work/school/recreation
- access to family
- suitability of the individual's living accommodation
- the individual's contribution to society.

Question 1



What is your current opinion of the mental health and wellbeing support of people using care?

Answer in sentences or key words

Put your answer in this box

Question 2

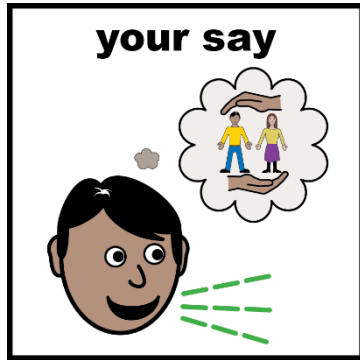


Do you know of any good ideas or examples of good practices that promote the support of the mental health and wellbeing of people using care?

Answer in sentences or key words

Put your answer in this box

Question 3



It's now time to have your say. What needs to promote the support of the mental health and wellbeing of people using care better?

Answer in sentences or key words

Put your answer in this box

Section 6 – Tell us about you – This is optional –

By completing this survey, you can be entered to win a £100 voucher

If you want to be entered we need your consent and a way to contact you

We also want to see who we are engaging with through this consultation

So we have a few questions about yourself

You can choose to remain anonymous

Question 1



Do you want to be entered into the competition to be in with a chance of winning the £100 voucher?

YES

NO

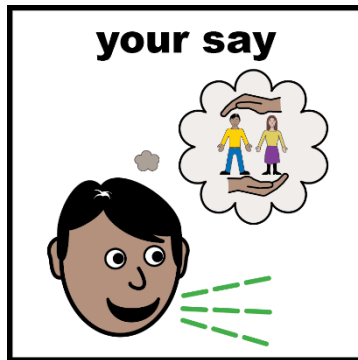
Question 2



How can we contact you if you win?

Put your answer in this box

Question 3



Would you like to be contacted about any of the answers you have given in this survey?

YES

NO

Question 4

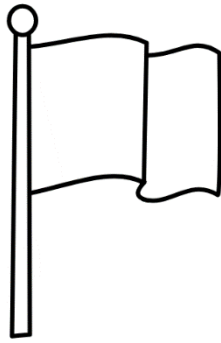


Do you identify as

- Male
- Female
- Non-Binary
- Other
- Prefer not to say

Put your answer in this box

Question 5



How would you describe your nationality?

Put your answer in this box

Question 6



How would you describe your ethnicity?

Put your answer in this box

Question 7



Do you consider yourself to be living with a disability?

If yes, do you mind giving more information?

Put your answer in this box

Question 8



What is your experience of social care?

Put your answer in this box

Question 9



How could we make this survey more accessible?

Put your answer in this box

All Images/Resources copyright© LYPFT